

MICRO SWITCH
 FREEPORT ILLINOIS U.S.A.
 A DIVISION OF HONEYWELL
 FED. MFG. CODE 91929

**SWITCH - TOGGLE
 FLUSH KEY**

CATALOG LISTING
2TP201-10

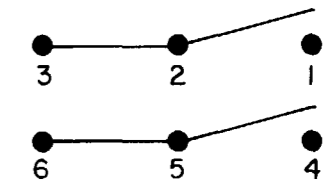
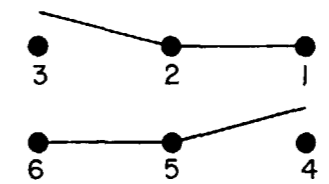
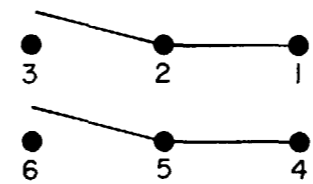
THIS DRAWING COVERS A PROPRIETARY ITEM AND IS THE PROPERTY OF MICRO SWITCH, A DIVISION OF HONEYWELL. THIS DRAWING IS NOT TO BE COPIED OR USED WITHOUT THE APPROVAL OF MICRO SWITCH.

CIRCUIT DIAGRAM

LUG SIDE
 (MAINTAINED POSITION)

CENTER
 (MAINTAINED POSITION)

OPPOSITE LUG
 (MAINTAINED POSITION)

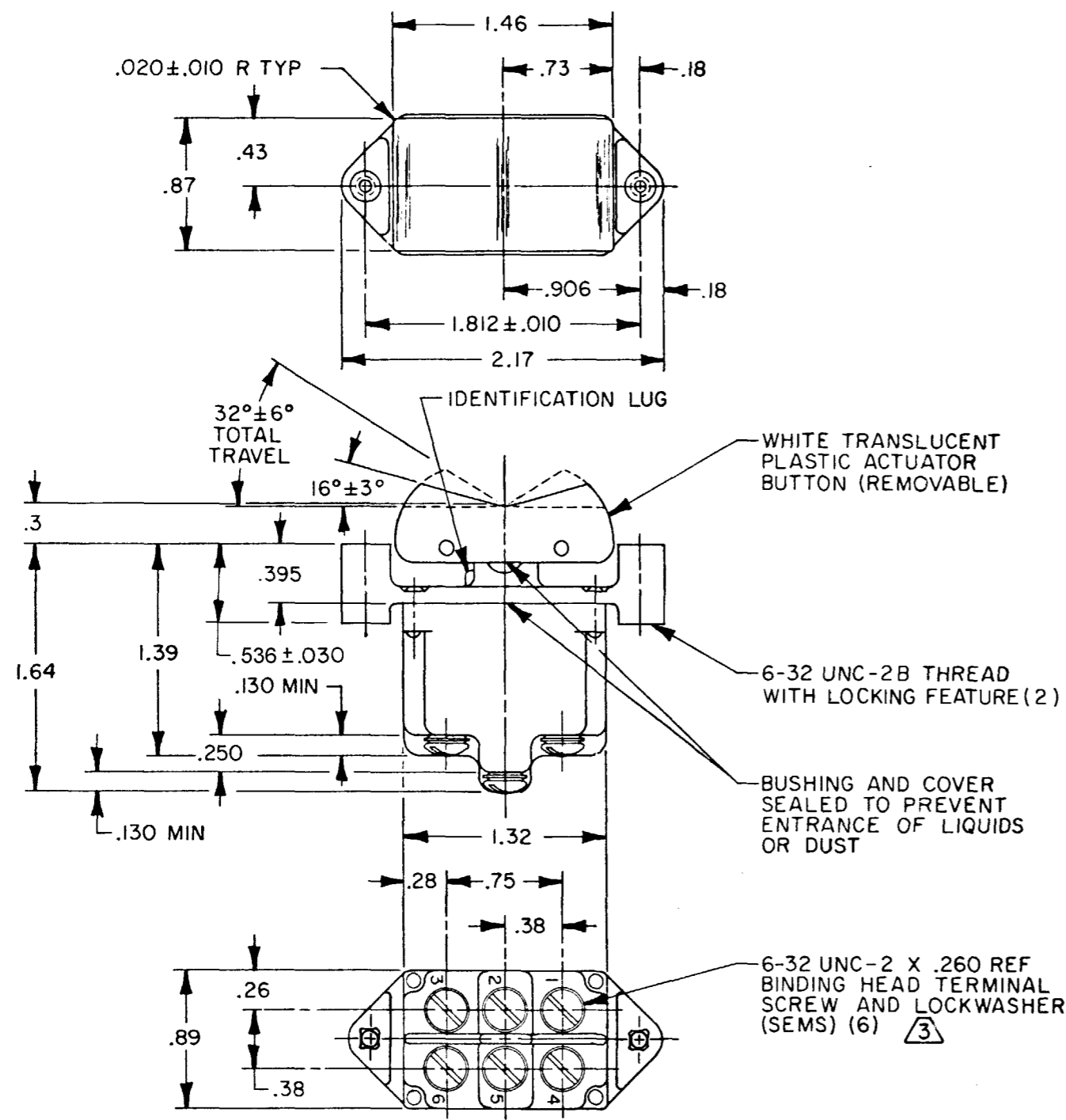


ELECTRICAL DATA

L191 15A 125, 250, 277 VAC
 1/2HP 125 VAC
 1HP 250, 277 VAC
 5A 125 VAC "L"



DRAWING NUMBER: 2TP201-10
 PAGE 1 OF 1
 RELEASE NO. PR-10585
 ISSUE 6
 REVISIONS:
 A CO56164 J A P MAR 85
 B CO57496 C J H SEP 85
 C CO58717-B W J K OCT 86
 D CO60369 W J K NOV 86
 E CO-94413 J J A OCT 99
 F 202714 C S L APR 01
 DRAWN: JEF
 CHECK: CEB
 DATE: 23 OCT 81
 RASTER FO-52854-C



THIRD ANGLE PROJECTION

SCALE FULL

DO NOT SCALE PRINT

TOLERANCES

APPLY TO DESIGN UNITS. CONVERSIONS ARE ONLY FOR REFERENCE. UNLESS NOTED, TOLERANCES ARE ±

	DIM.	TOL.	DIM.	TOL.
	mm	mm/m	in	mm/in
NO PLACES	X	1/.04	X	0.0015
ONE PLACE	X,X	0.4/.016	X,X	0.005
TWO PLACES	X,XX	0.15/.006	X,XX	0.0015
THREE PLACES	X,XXX		X,XXX	0.13/.005

SI METRIC US CUSTOMARY

DESIGN UNITS WEIGHT .14 LB EST

NOTES

- 1 SWITCH WILL WITHSTAND TEMPERATURE OF 160°F
- 2 - CIRCUIT DESIGNATION AND MICRO SWITCH CAT. LIST. STAMPED ON SIDE OF SWITCH
- 3 SCREWS FURNISHED UNASSEMBLED